

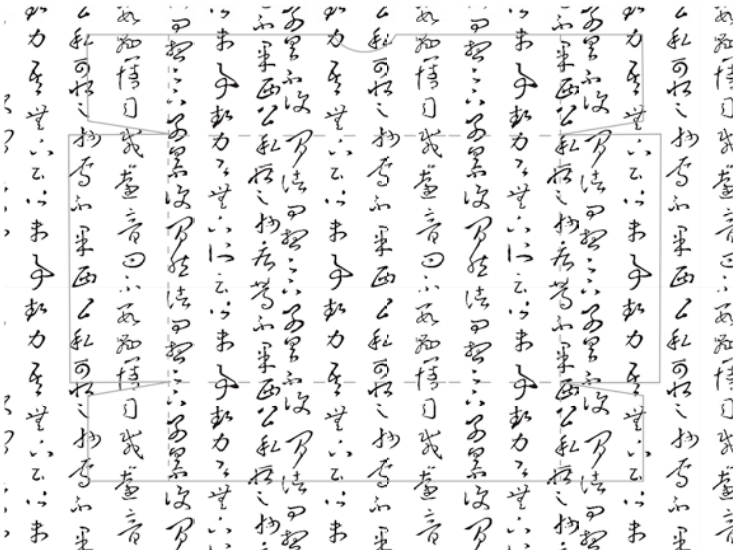
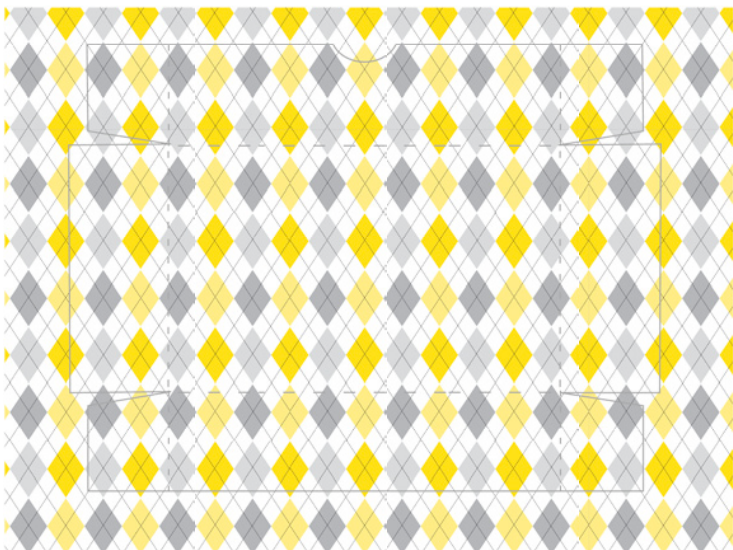
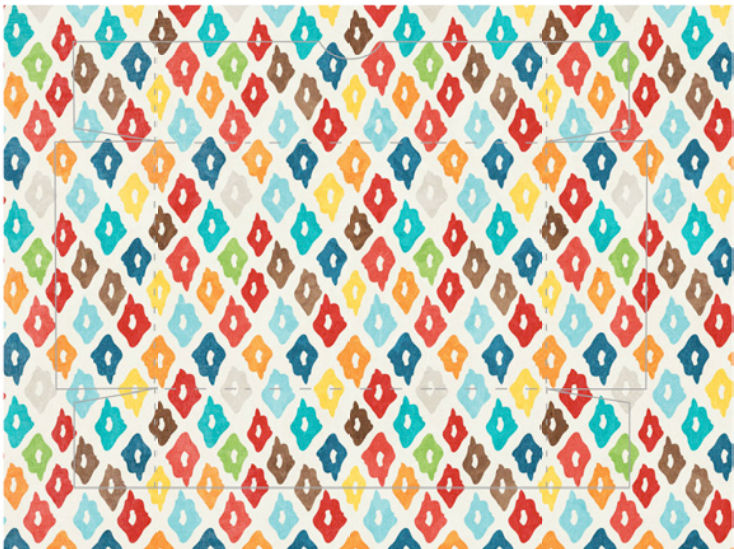
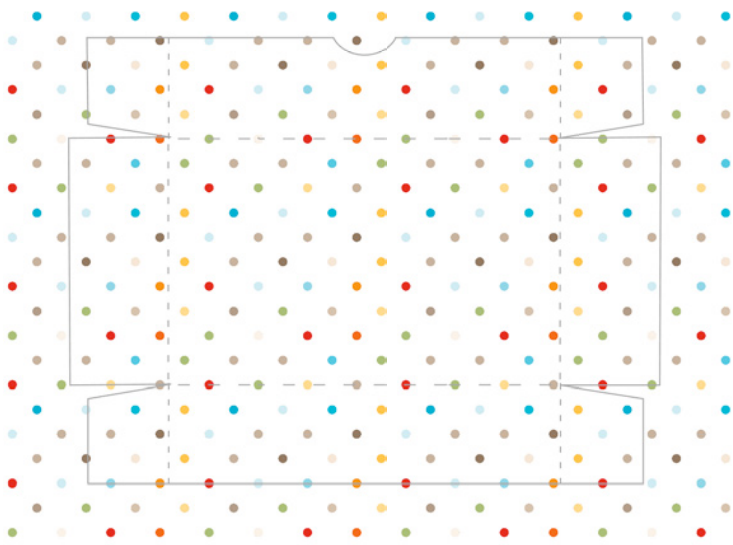
## Craft Storage Printie

1. Print page A on lightweight white cardstock at your printer's best quality setting. (Photo paper will work, too.)
3. Put the printout back in the printer tray, making sure the print side and top are correctly located for your printer. Print page B.
4. There are light grey drawer outlines on the A side, cut on the solid lines and fold the flaps toward you on the dashed lines. Use glue stick to adhere the tabs inside the drawers. Your drawers are patterned inside and out!
5. For plain white drawer interiors, print page A only and fold the flaps away from you. Glue as above.

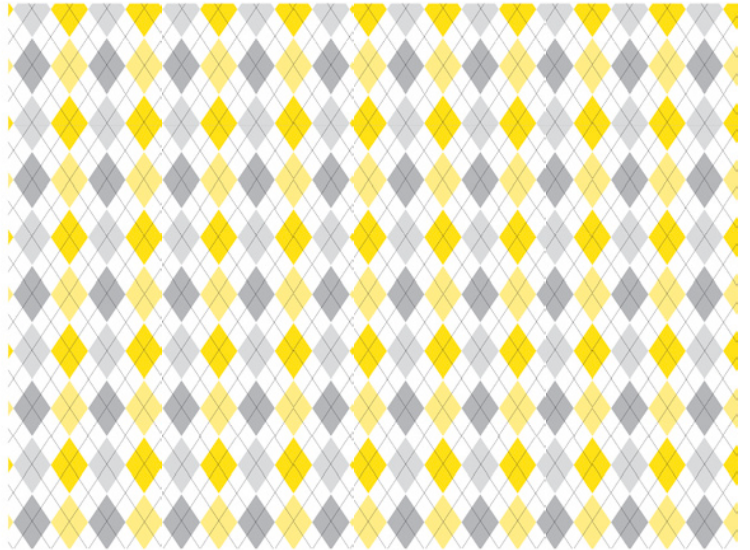
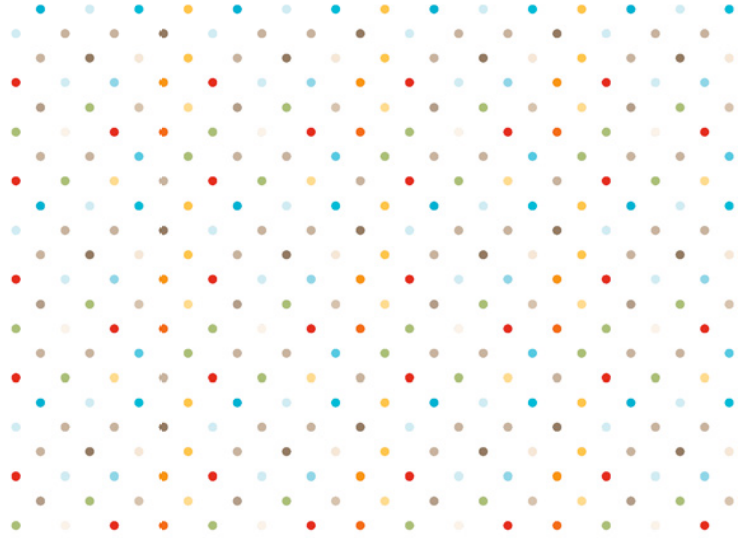
Tip: You can trim the drawers or choose to leave the top slots open. If you prefer the look of drawer pulls or knobs, turn the cutout side of the drawer to the back and glue on lightweight knobs or handles. Good options include #1115, #1112, #12007, #12005, #15545, #1123, #1119, #1110 and #1117 (knobs may require you to make a small hole in the cardstock).



# TOP, page A



# TOP, page B



私に可相之物有不果西之私に可相之物有不果  
 如力在望下之未予如力在望下之未  
 可相之物有不果西之私に可相之物有不果  
 如力在望下之未予如力在望下之未  
 私に可相之物有不果西之私に可相之物有不果  
 如力在望下之未予如力在望下之未  
 可相之物有不果西之私に可相之物有不果  
 如力在望下之未予如力在望下之未  
 私に可相之物有不果西之私に可相之物有不果  
 如力在望下之未予如力在望下之未  
 可相之物有不果西之私に可相之物有不果  
 如力在望下之未予如力在望下之未  
 私に可相之物有不果西之私に可相之物有不果  
 如力在望下之未予如力在望下之未  
 可相之物有不果西之私に可相之物有不果  
 如力在望下之未予如力在望下之未