

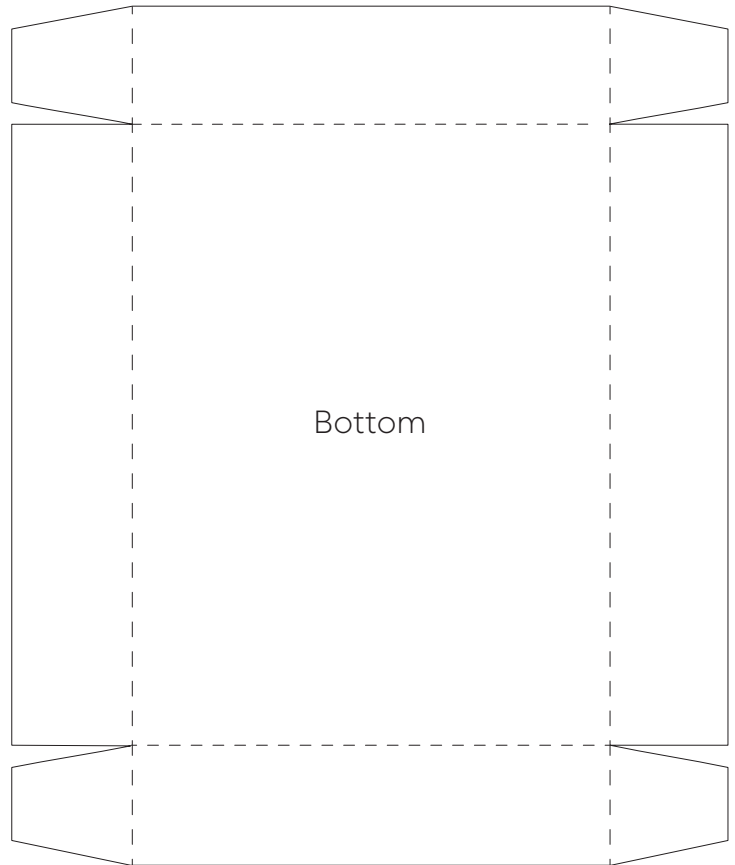
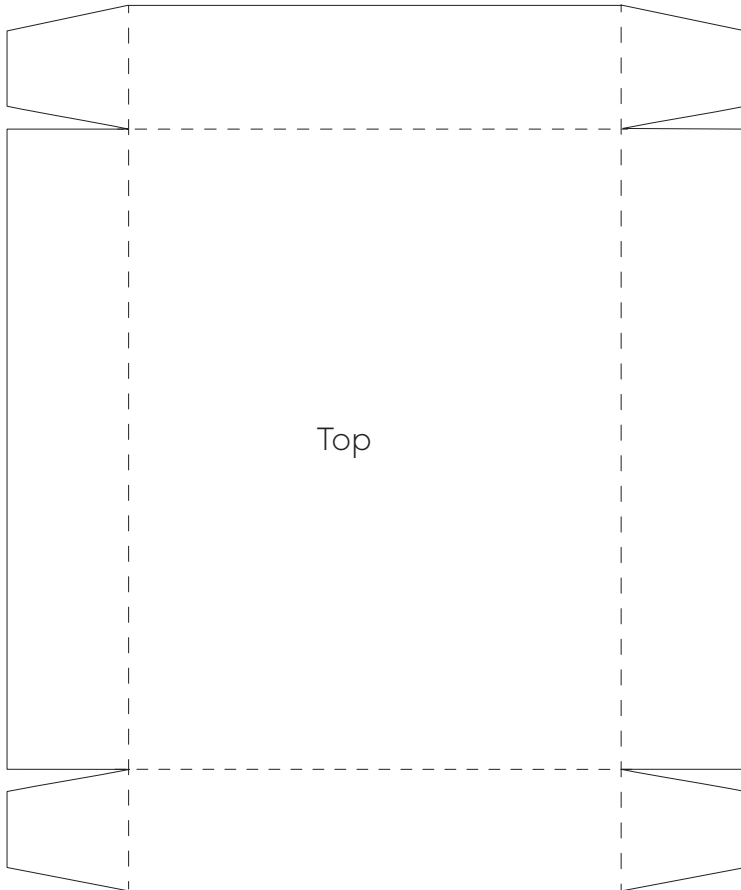
The Brentwood Dollhouse Box

Print on lightweight cardboard or kraftcardstock.* Cut on solid lines; fold on dotted lines. Glue tabs inside box with glue stick or white glue. Be sure corners are square and clamp with clothespins or similar clips to dry.

Print cover/label on lightweight paper. Cut out and glue to assembled box top with glue stick, turning edges and tabs inside.

This printie makes a cute empty box that's perfect as a decorative accent or gift.

* If printed on plain paper, glue to lightweight cardboard with glue stick. Cut and assemble as above, with paper template on the inside.



The Brentwood Kit from Paper Doll Miniatures

miniatures.com

#41045
The Brentwood Kit from Paper Doll Miniatures

Available exclusively at miniatures.com
2388 Pleasantdale Road, Atlanta, GA 30340
1.800.926.6464 • www.miniatures.com

TSCA TITLE VI Compliant
Not suitable for children under 13 years of age

Made in Thailand
122-304832

The Brentwood Kit from Paper Doll Miniatures

The Brentwood Kit from Paper Doll Miniatures

The Brentwood Kit from Paper Doll Miniatures